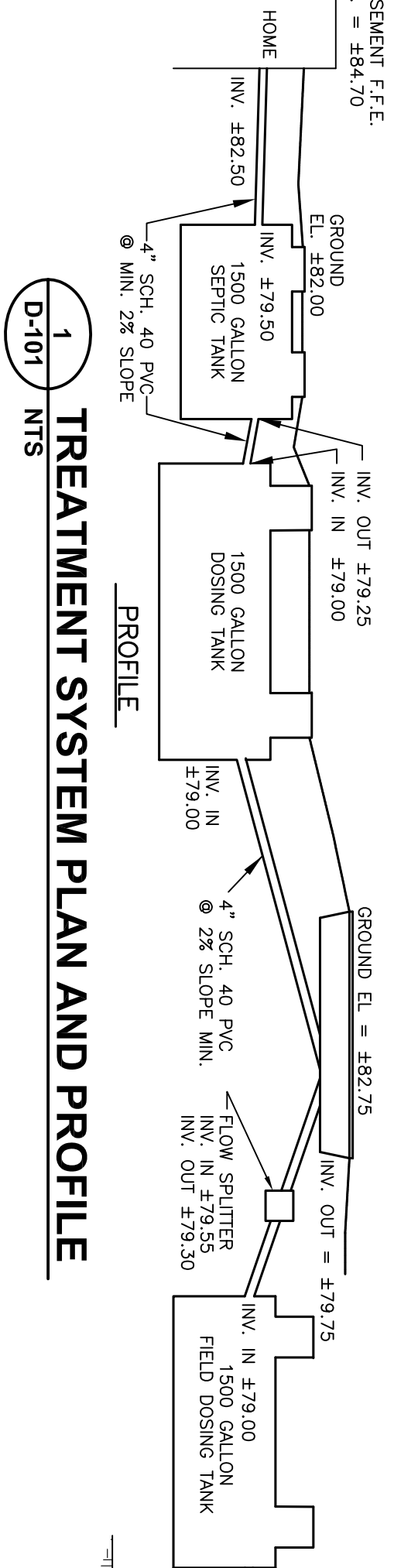
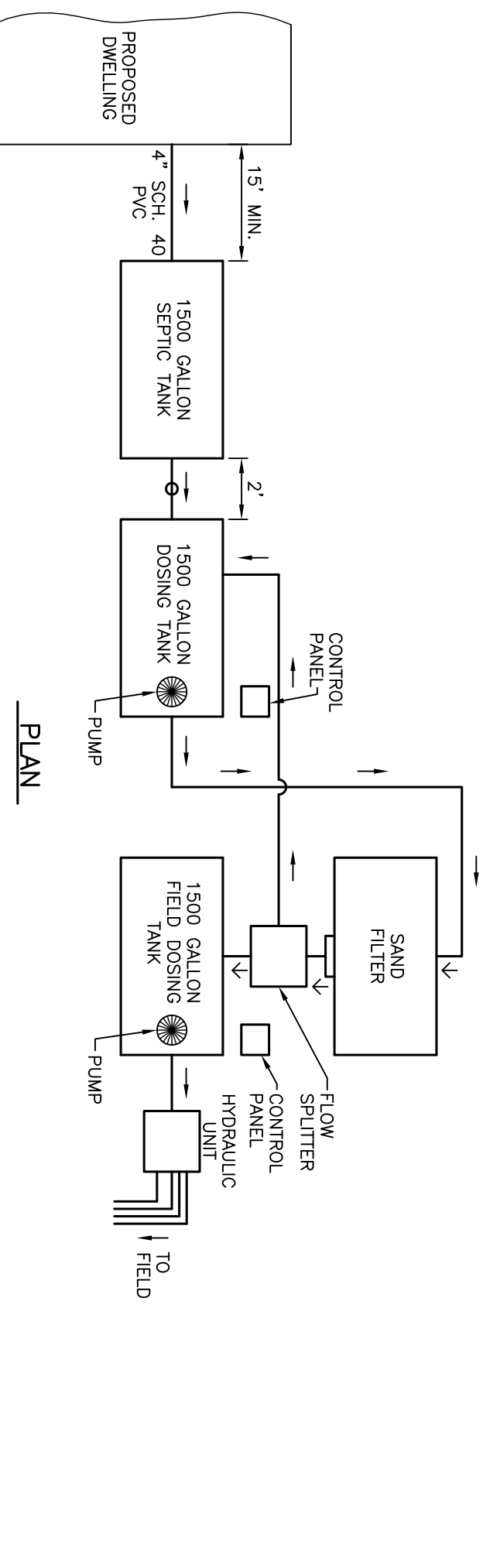
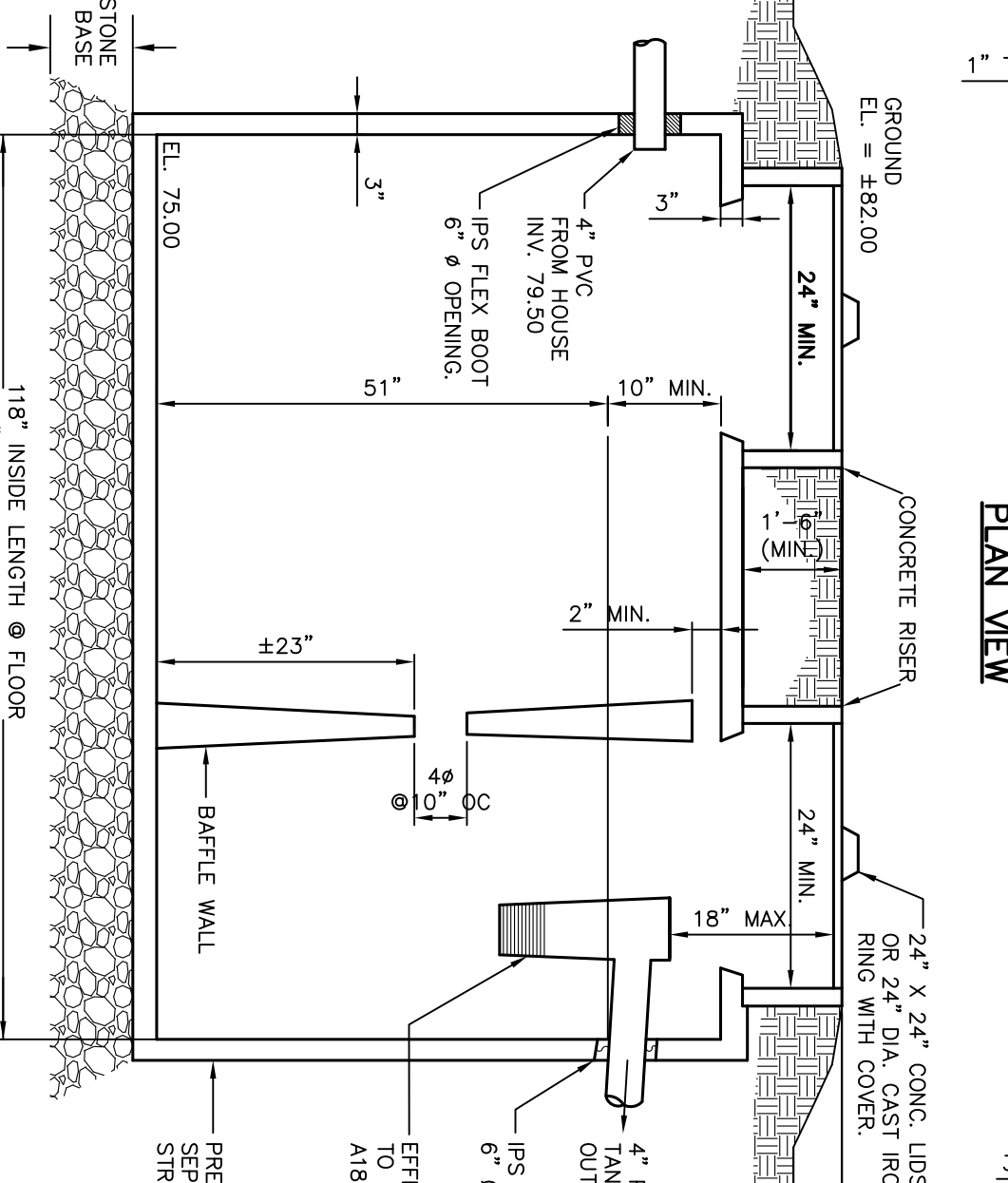
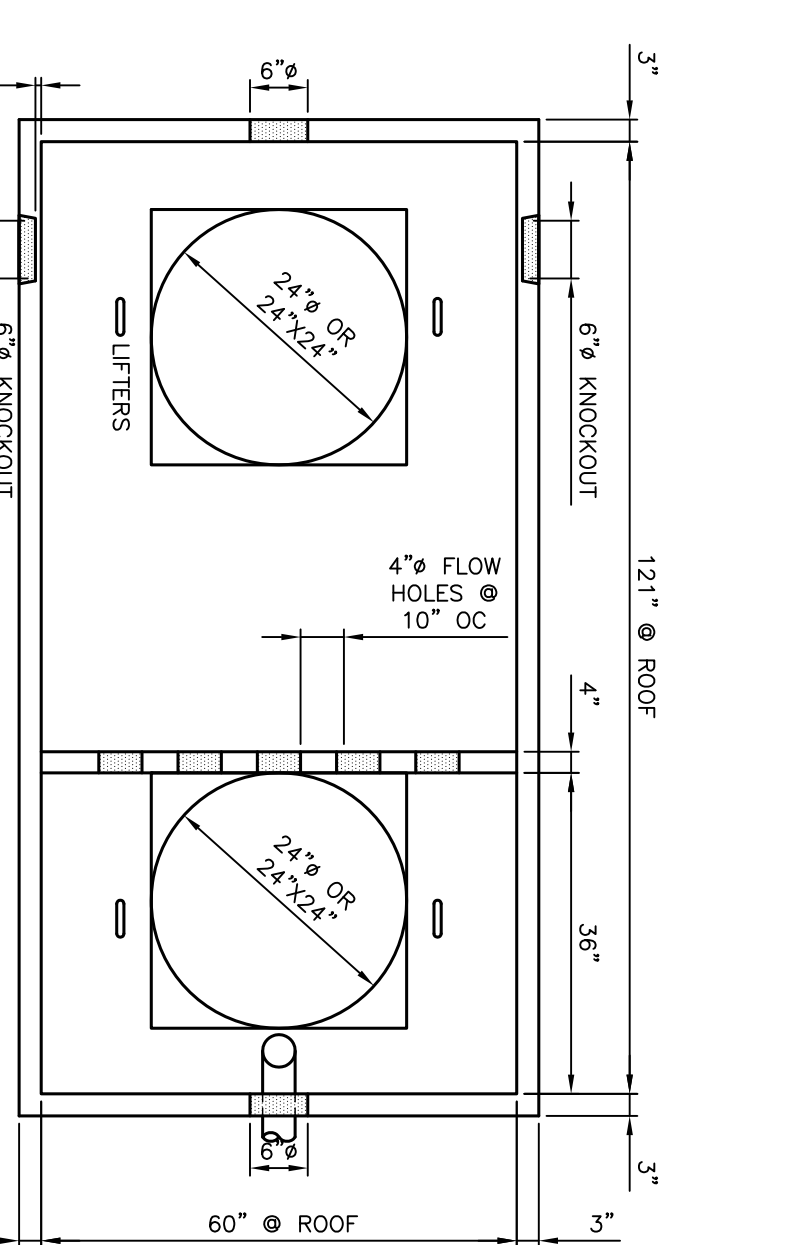


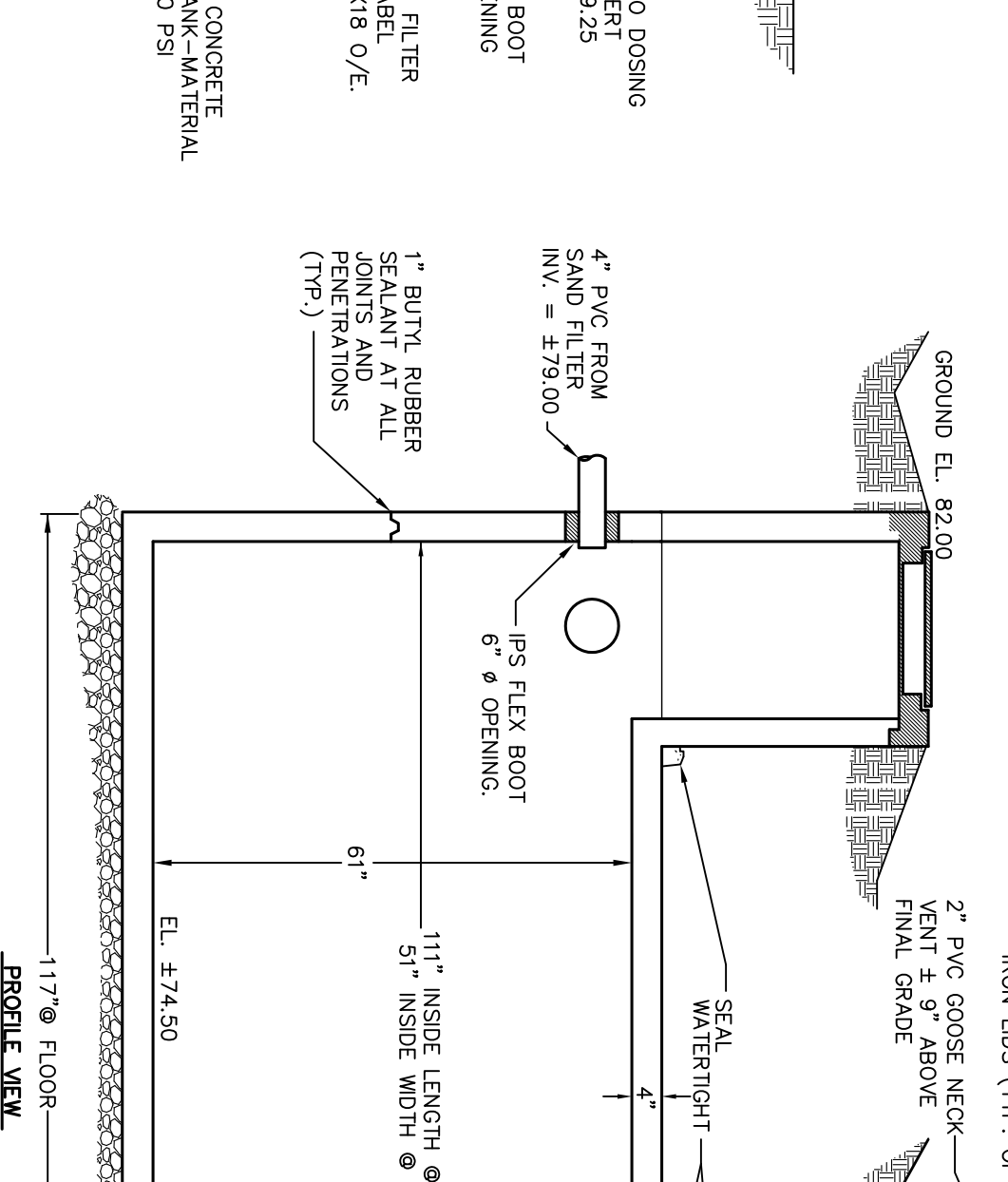
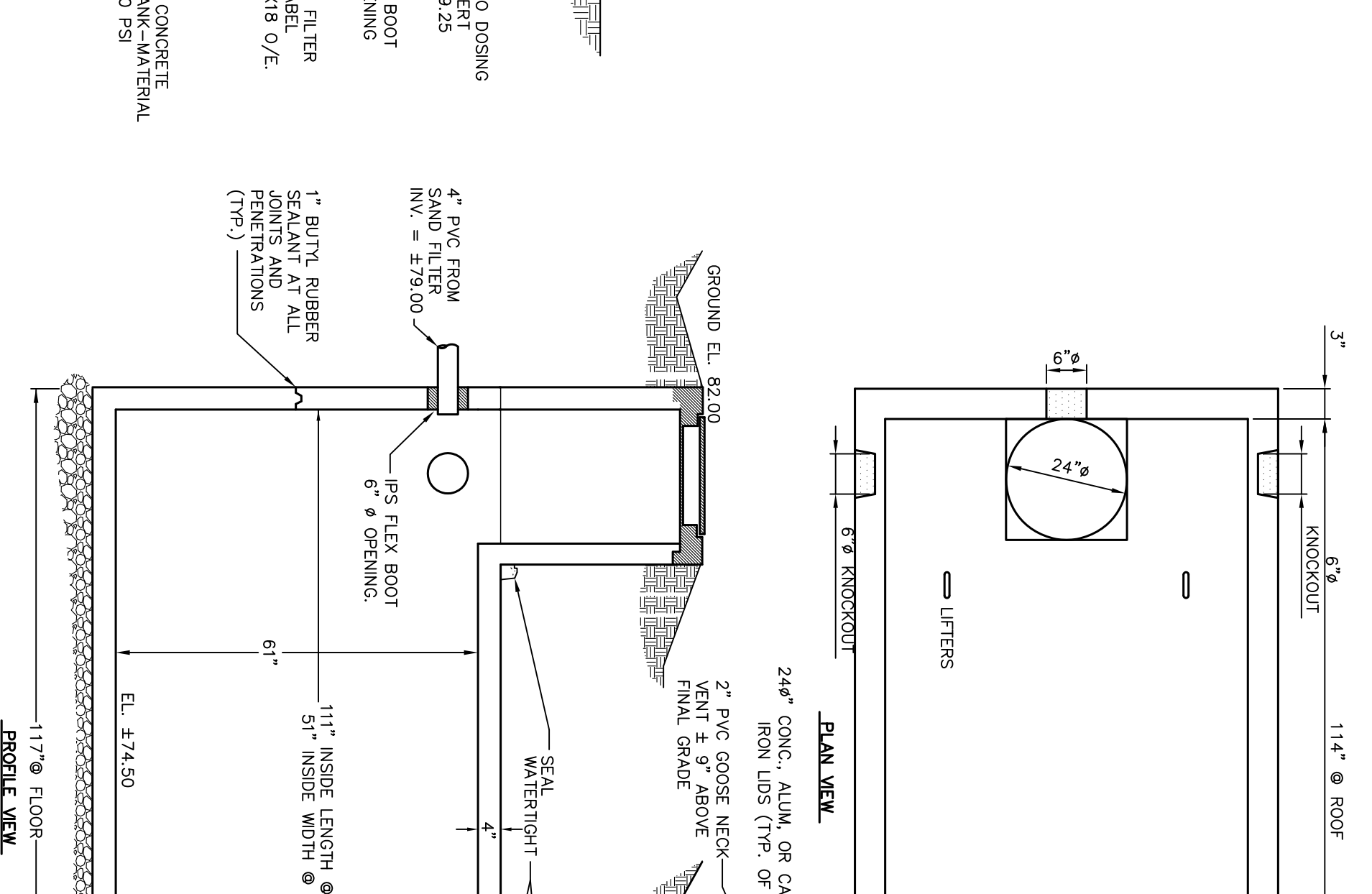
1. SEE SHEET C-101 FOR GENERAL NOTES.
2. CONTRACTOR SHALL BACKFILL AROUND ACCESS POINTS TO PREVENT STORM DRAINAGE FROM BEING SHED AWAY FROM THESE POTENTIAL ENTRY WAYS.
3. CONTRACTOR SHALL PERFORM LEAKAGE TESTING NOT EXCEED 20 GALLONS PER 24 HOURS PER 1,000 GALLONS OF TANK CAPACITY.
4. ALL ELEVATIONS GIVEN ARE BASED ON SURVEYORS SITE AND SUBJECT TO FIELD VERIFICATION AND ADJUSTMENT AS MAY BE REQUIRED.
5. PRECAST CONCRETE TANKS BY BLACKWELDER TANK CO. (CARPENTHA, NC) (919) 718-5181.



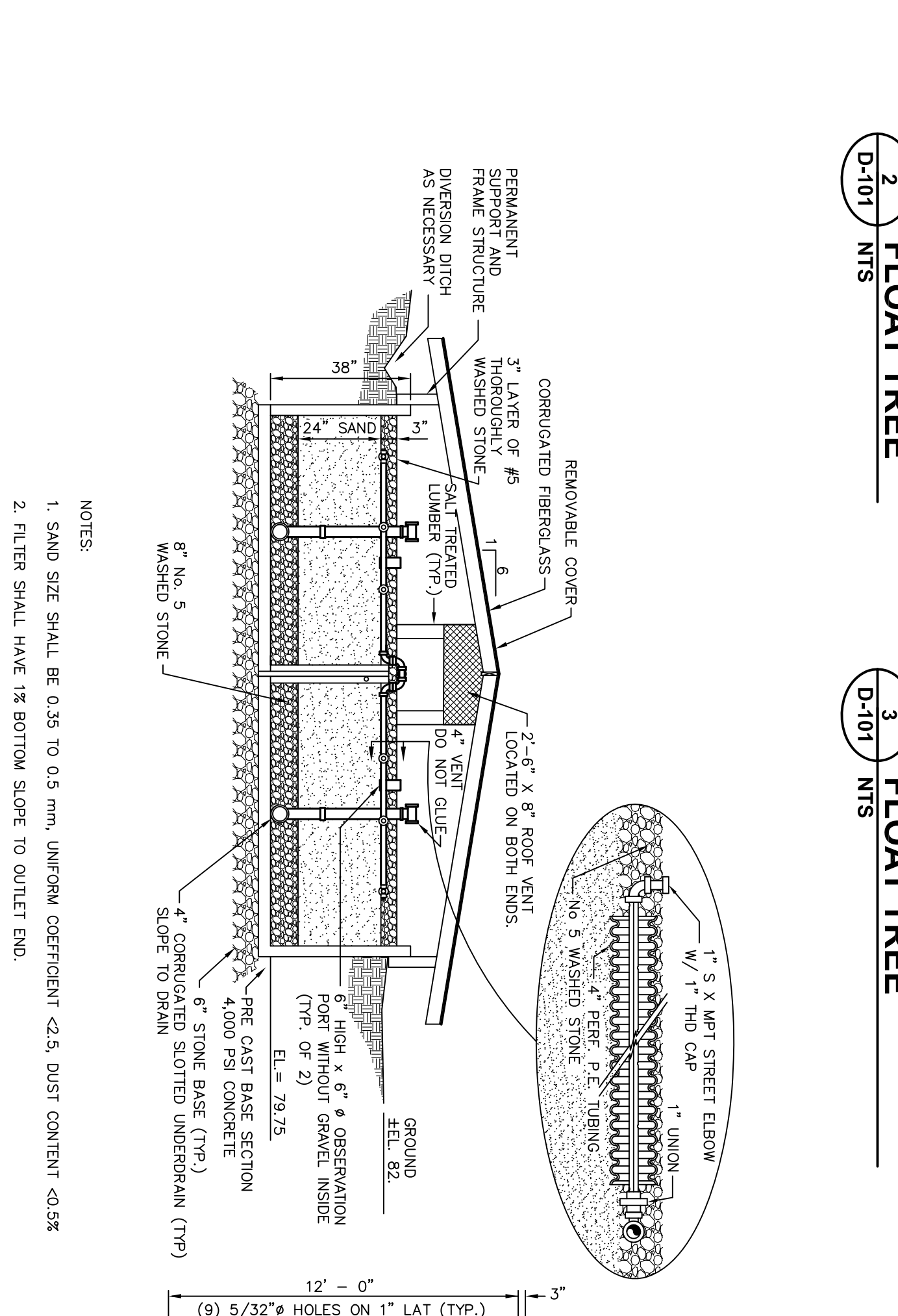
1 TREATMENT SYSTEM PLAN AND PROFILE
D-101 NTS



4 1500 GALLON SEPTIC TANK
D-101 NTS

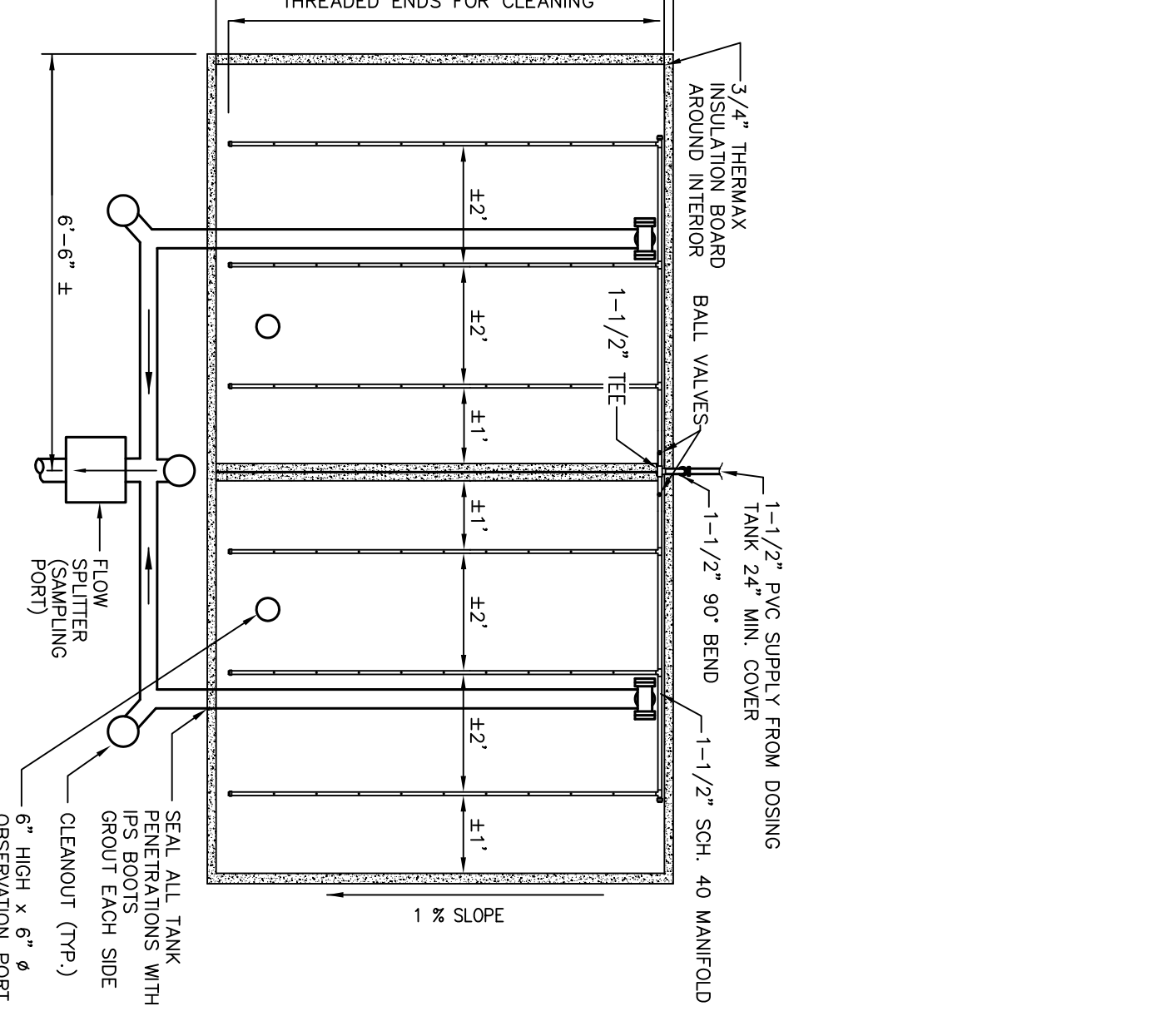


5 1500 GAL. FIELD DOSING TANK
D-101 NTS

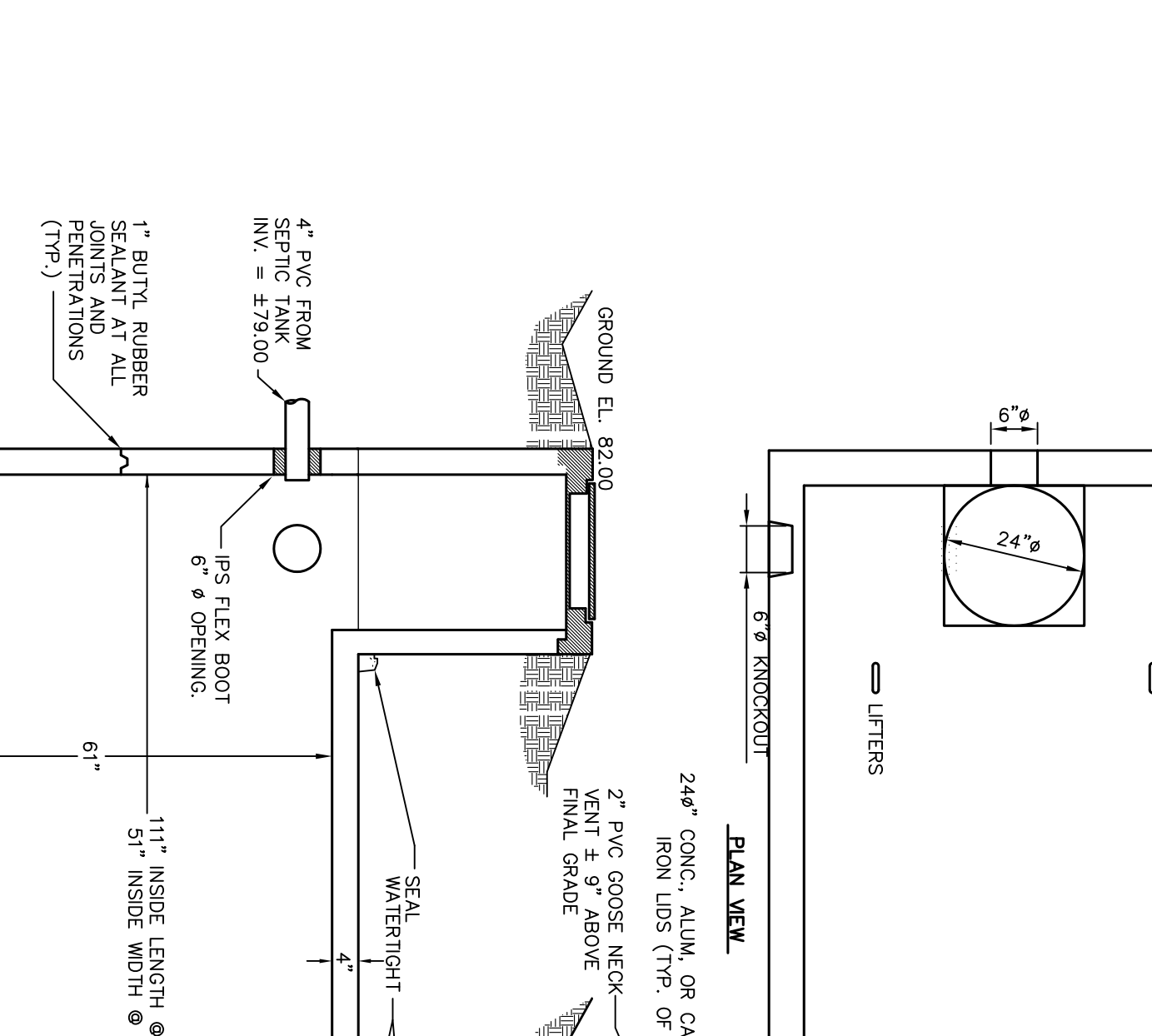


2 FIELD DOSING FLOAT TREE
D-101 NTS

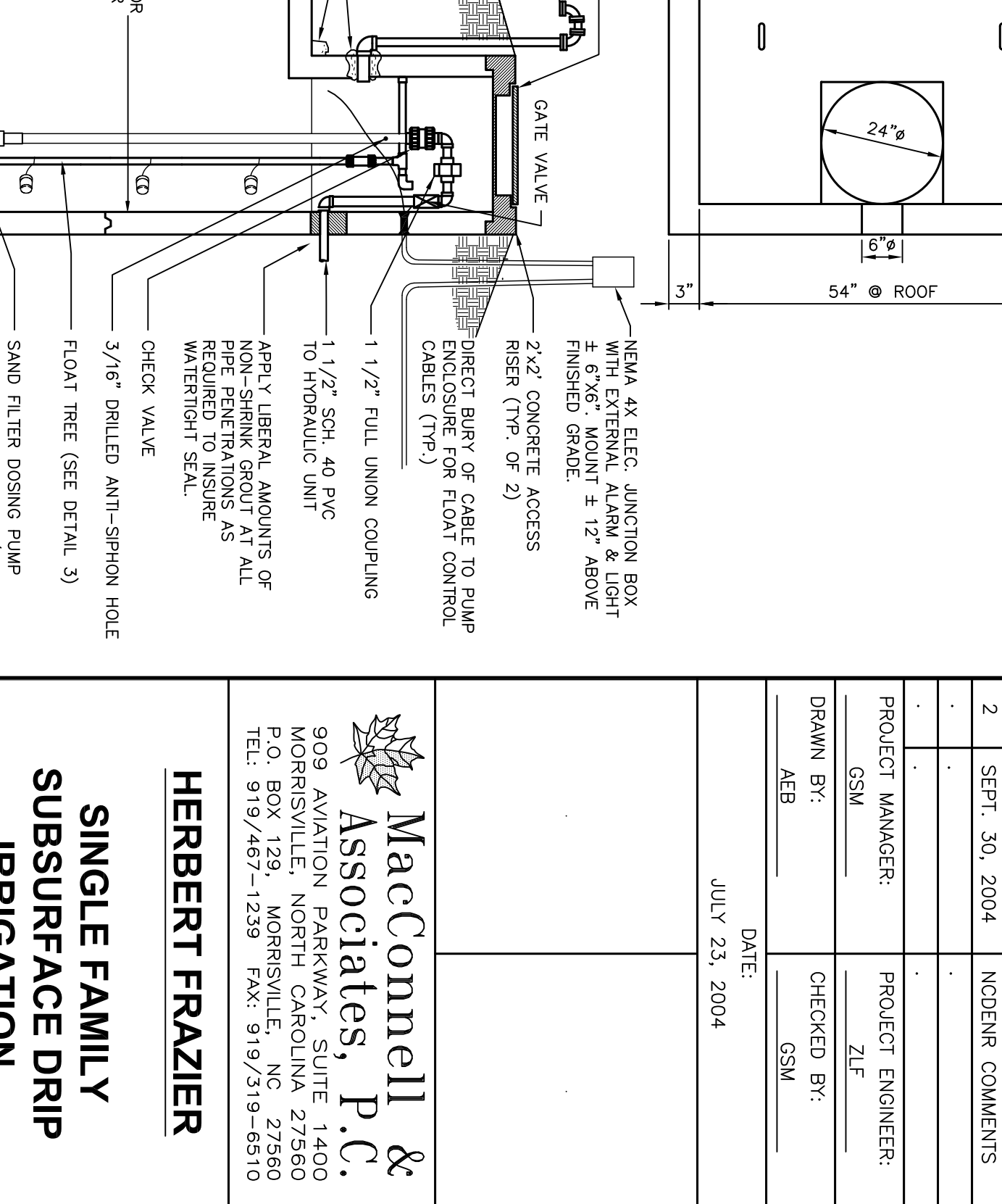
3 SAND FILTER DOSING FLOAT TREE
D-101 NTS



6 SAND FILTER PLAN & SECTION VIEWS
D-101 NTS



7 1500 GAL. SAND FILTER DOSING TANK
D-101 NTS



- NOTES:**
1. PUMP TANK BY BLACKWELDER TANK CO. (APPROVAL # P1-312)
 2. FIELD VERIFY BEFORE ORDERING
 3. MAXIMUM COVER OVER ROOF OF TANK TO BE 30% ORIENTATION. DIMENSIONS VARY PER MANUFACTURER.
 4. SEE PLAN FOR ORIENTATION. DIMENSIONS VARY PER MANUFACTURER.
 5. PRECAST CONCRETE TANKS BY BLACKWELDER TANK CO. (CARPENTHA, NC) (919) 718-5181.

| NO. | DATE | REVISION DESCRIPTION |
|--|----------------|----------------------|
| 1 | JULY 23, 2004 | INITIAL |
| 2 | SEPT. 30, 2004 | NOENR COMMENTS |
| PROJECT MANAGER: PROJECT ENGINEER: ZLF | | |
| DRAWN BY: AFB CHECKED BY: GSM | | |
| DATE: JULY 23, 2004 | | |

MacConnell & Associates, P.C.
908 AVIATION PARKWAY, SUITE 1400
MORRISVILLE, NORTH CAROLINA 27560
P.O. BOX 1000
TEL. 919/467-1238 FAX. 919/319-6510

HERBERT FRAZIER

SINGLE FAMILY SUBSURFACE DRIP IRRIGATION

CHATHAM COUNTY, NC

DETAILS 1